

Attachment 2: Personal Presentation Policy

Field Work

Personal Presentation

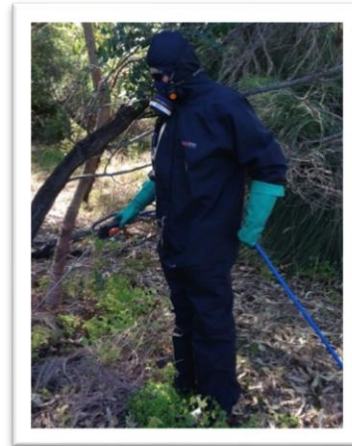
- ✓ Clean shaven daily; facial hair is not permissible as it prevents a good seal between the spray mask and the skin.
- ✓ Body piercings not to impinge safety equipment (e.g. large earrings)
- ✓ Long hair tied back; for safety

Uniform

- ✓ Full sun protection; NAH issued wide brimmed hat must be worn when working outside, remove hat for indoor meetings
- ✓ NAH ID badge to be displayed at all times
- ✓ Wear neatly presented NAH issued long sleeve hi-vis shirt for field work (yellow high-vis for field BU), shirt tucked in
- ✓ Steel capped work boots or wellington boots in good condition, we recommend steel blue argyle (wheat/black) with bump cap with socks of adequate length to prevent skin exposure
- ✓ Long work trousers, cotton drill (khaki, navy) clean and in good condition, of adequate length to prevent skin exposure

Demeanour

- ✓ Make eye contact, smile with a welcoming and friendly manner
- ✓ Speak clearly at an appropriate volume using professional language
- ✓ Shake hands and introduce yourself when meeting for the first time



Nursery Work

Personal Presentation

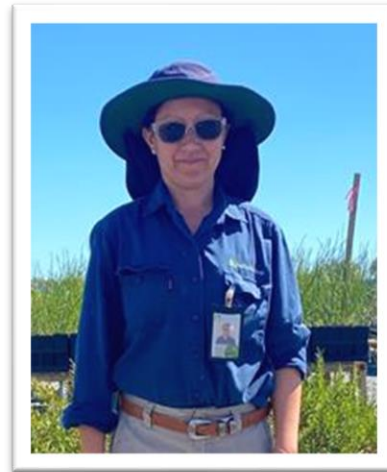
- ✓ Clean shaven daily; facial hair is not permissible as it prevents a good seal between the spray mask and the skin.
- ✓ Body piercings not to impinge safety equipment (e.g. large earrings)
- ✓ Long hair tied back; for safety

Uniform

- ✓ Full sun protection; wide brimmed hat must be worn when working outside
- ✓ NAH ID badge to be displayed at all times
- ✓ Wear neatly presented long sleeve NAH issued nursery work shirt, tucked in
- ✓ Steel capped work boots or wellington boots in good condition, we recommend steel blue argyle (wheat/black) with bump cap with socks of adequate length to prevent skin exposure
- ✓ Long work trousers, cotton drill (khaki, navy) clean and in good condition, of adequate length to prevent skin exposure

Demeanour

- ✓ Make eye contact, smile with a welcoming and friendly manner
- ✓ Speak clearly at an appropriate volume using professional language
- ✓ Shake hands and introduce yourself when meeting for the first time



Office Work

Personal Presentation

- ✓ Clean shaven daily; facial hair is not permissible
- ✓ Hair neat and tidy, secured away from face
- ✓ Hair of a natural colour (i.e. no pink, purple etc. hair dye)

Uniform

- ✓ NAH ID badge to be displayed at all times
- ✓ Wear neatly presented NAH issued work shirt (ironed)
- ✓ Professional pants or skirts
- ✓ Appropriate footwear
- ✓ For field based work refer to Field Work guidelines (high vis requirements will be determined on a project by project basis)



Demeanour

- ✓ Make eye contact, smile with a welcoming and friendly manner
- ✓ Speak clearly at an appropriate volume using professional language
- ✓ Shake hands and introduce yourself when meeting for the first time

